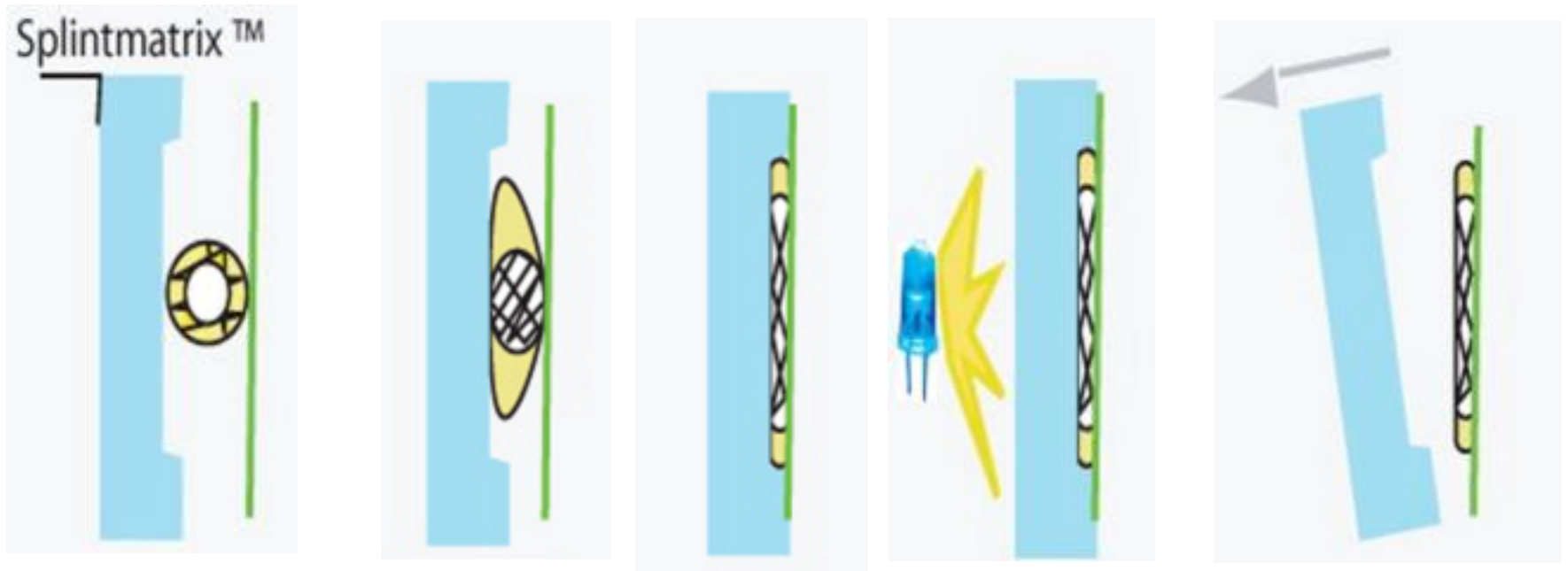


Fast Splint Matrix Technique
Space Maintainer – Direct Method

The *Fast Splint Matrix* Technique



The technique ensures that the tubular form of the fiber is compressed to a flat shape, also creating an increased bondable strip on each side of the fiber.

The *Fast Splint Matrix* Technique



The technique ensures that the tubular form of the fiber is compressed to a flat shape, also creating an increased bondable strip on each side of the fiber.



Tooth had been extracted



Cut horizontal and vertical retentive troughs/channels into the lingual side of the space maintainer



Insert Fast Splint Matrix wax into position. Ensure the wax is well adapted to interproximal areas.



Inject Fast Splint Matrix clear silicone to create an index or record of the space maintainer and wax.



The cured silicone will create a record of the wax and space maintainer. Trim the index as required.



Conserve the wax strip as it will be used to determine the exact length of fiber needed



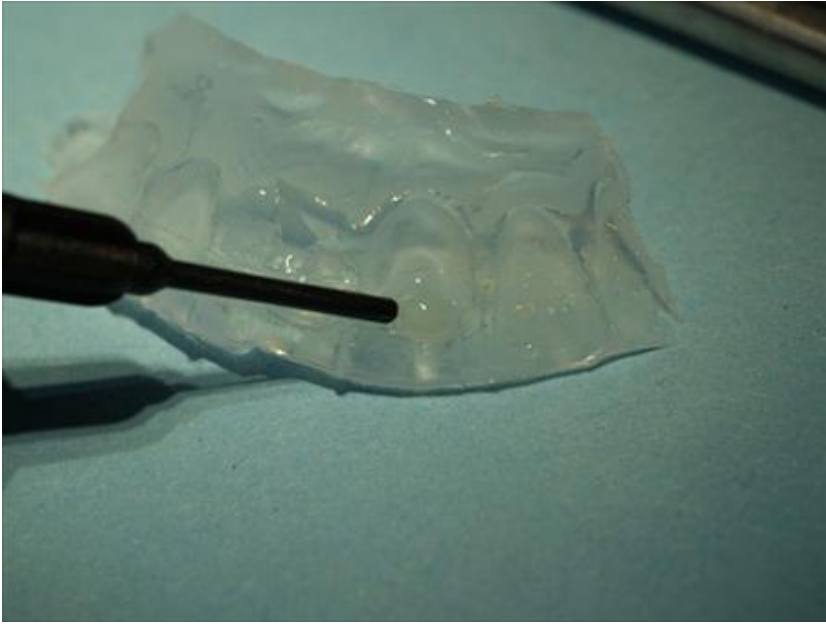
Etch the tooth surfaces to be bonded for 30 seconds, then rinse.



Ensure the interproximal areas are also etched



Using the wax strip as a guide cut the precise length of fiber



Inject Fast Splint Matrix flowable composite resin into the trough on the index.



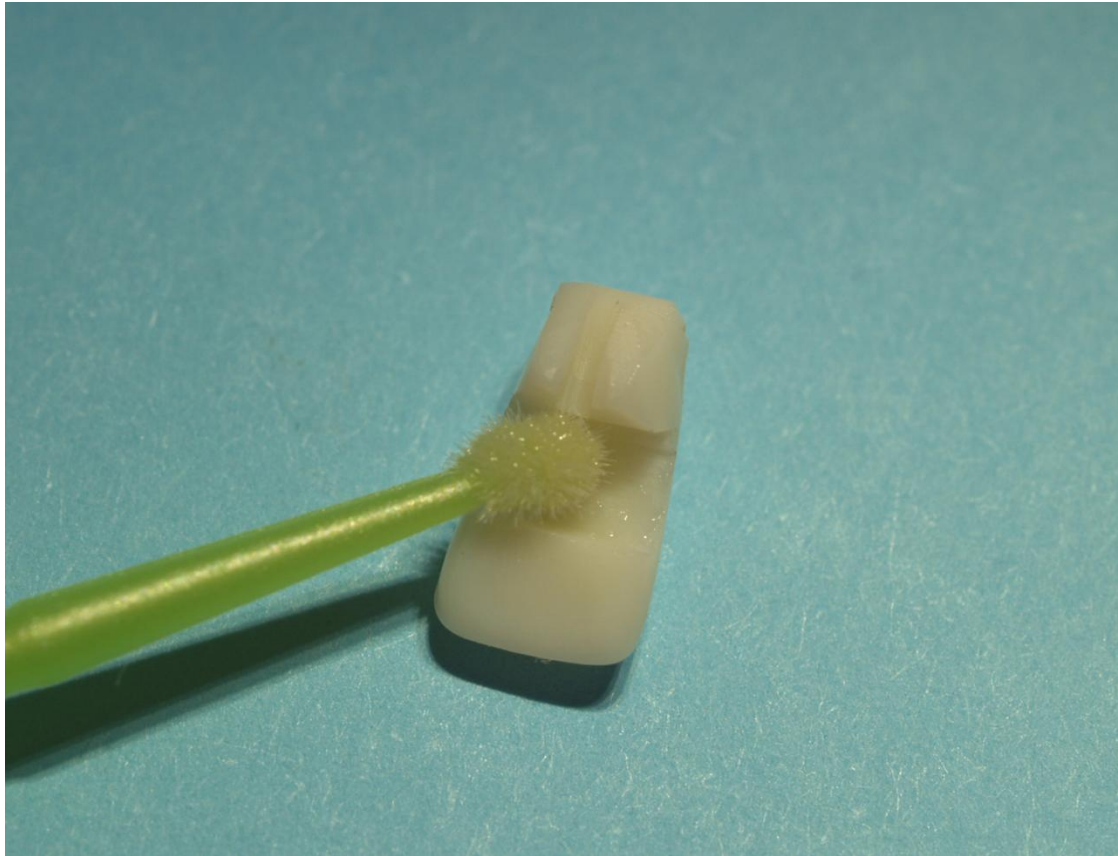
Insert the Fast Splint Matrix fiber into the trough



Apply Fast Splint Matrix Bond onto the tooth surfaces to be bonded and light cure for 30 seconds



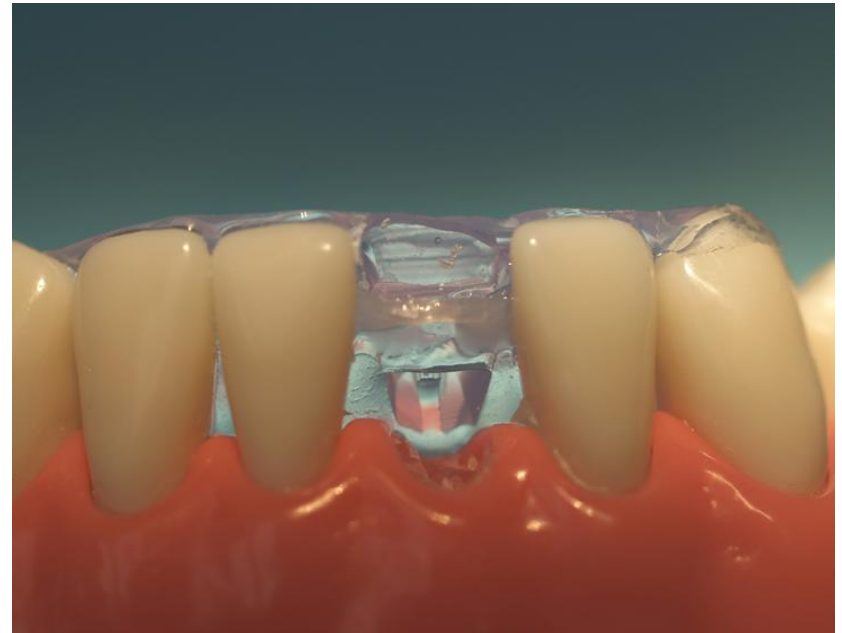
Be sure to apply Fast Splint Matrix Bond to the interproximal surfaces of the abutments



Remember to apply and light cure Fast Splint Matrix Bond onto the lingual channels in the space maintainer



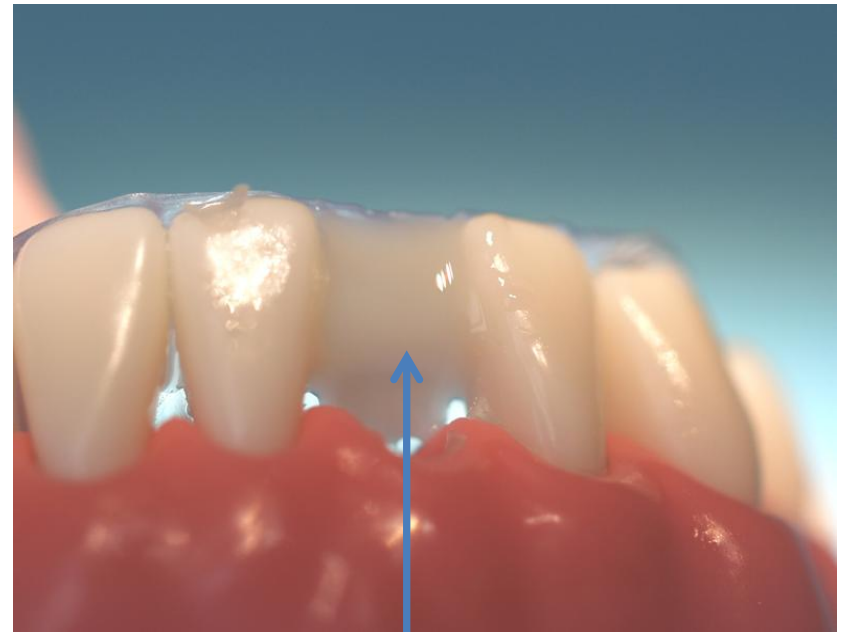
Apply a layer of Fast Splint Matrix flow composite resin onto the lingual surfaces of the teeth to be bonded



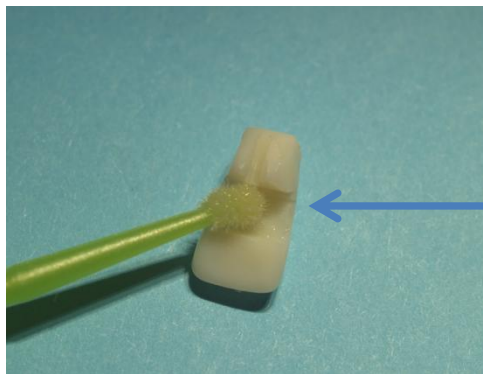
Insert the silicone matrix into position with the Fast Splint Matrix in position in the trough



Apply Fast Splint Matrix flow composite resin onto the fiber and fill the trough

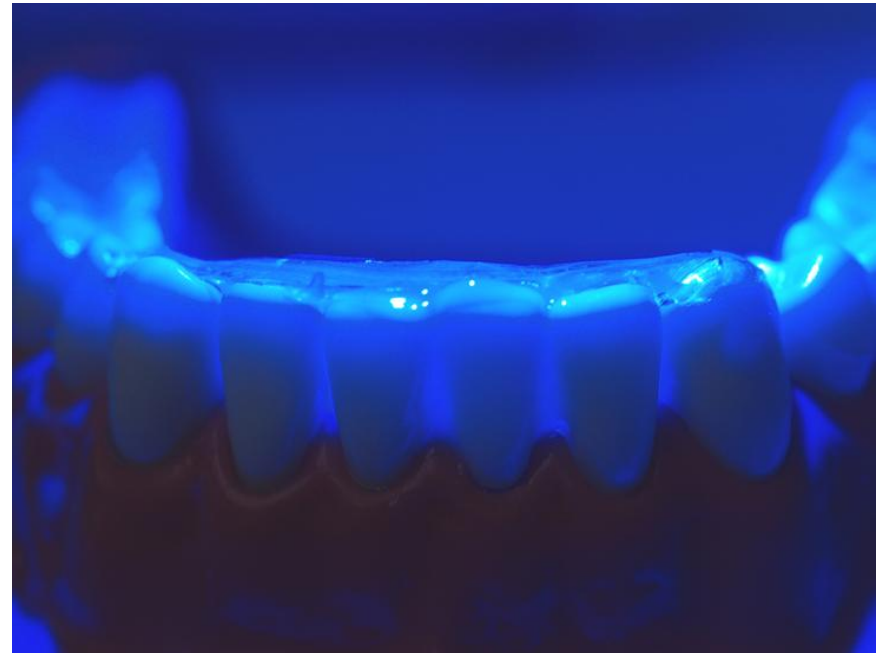


Cover the exposed surface with a thin layer of flow resin. **Fill the space in the space maintainer with flow resin.**





Place the space maintainer into position in the index and apply a firm pressure to compress the space maintainer and fiber



Light cure for 60 seconds



Remove the index



Inject flow resin into the trough and completely cover the fiber "wings" on the abutments. Light cure for 60 seconds.



Trim and polish the space maintainer to the desired final contours, smoothing the surfaces, removing any excess resin and ensuring the gingival embrasures are unobstructed