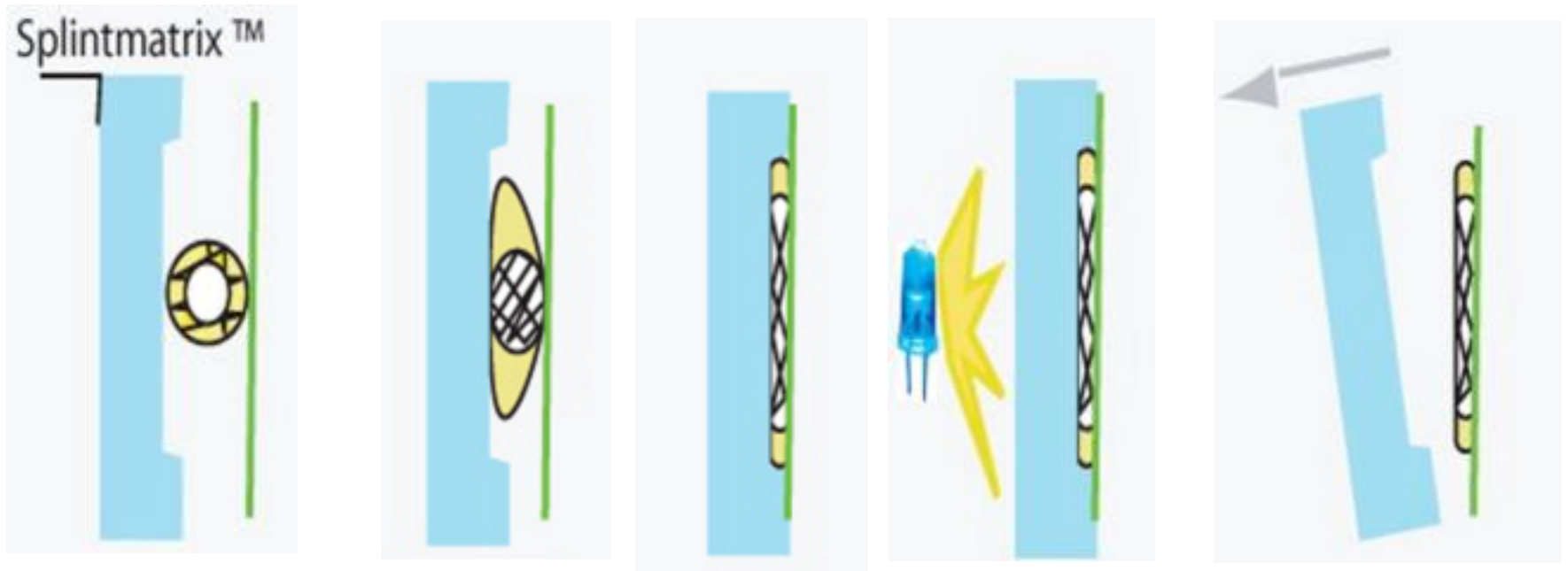


*Fast Splint Matrix* Technique  
**Space Maintainer – Indirect Method**

## The *Fast Splint Matrix* Technique



The technique ensures that the tubular form of the fiber is compressed to a flat shape, also creating an increased bondable strip on each side of the fiber.

## The *Fast Splint Matrix* Technique



The technique ensures that the tubular form of the fiber is compressed to a flat shape, also creating an increased bondable strip on each side of the fiber.



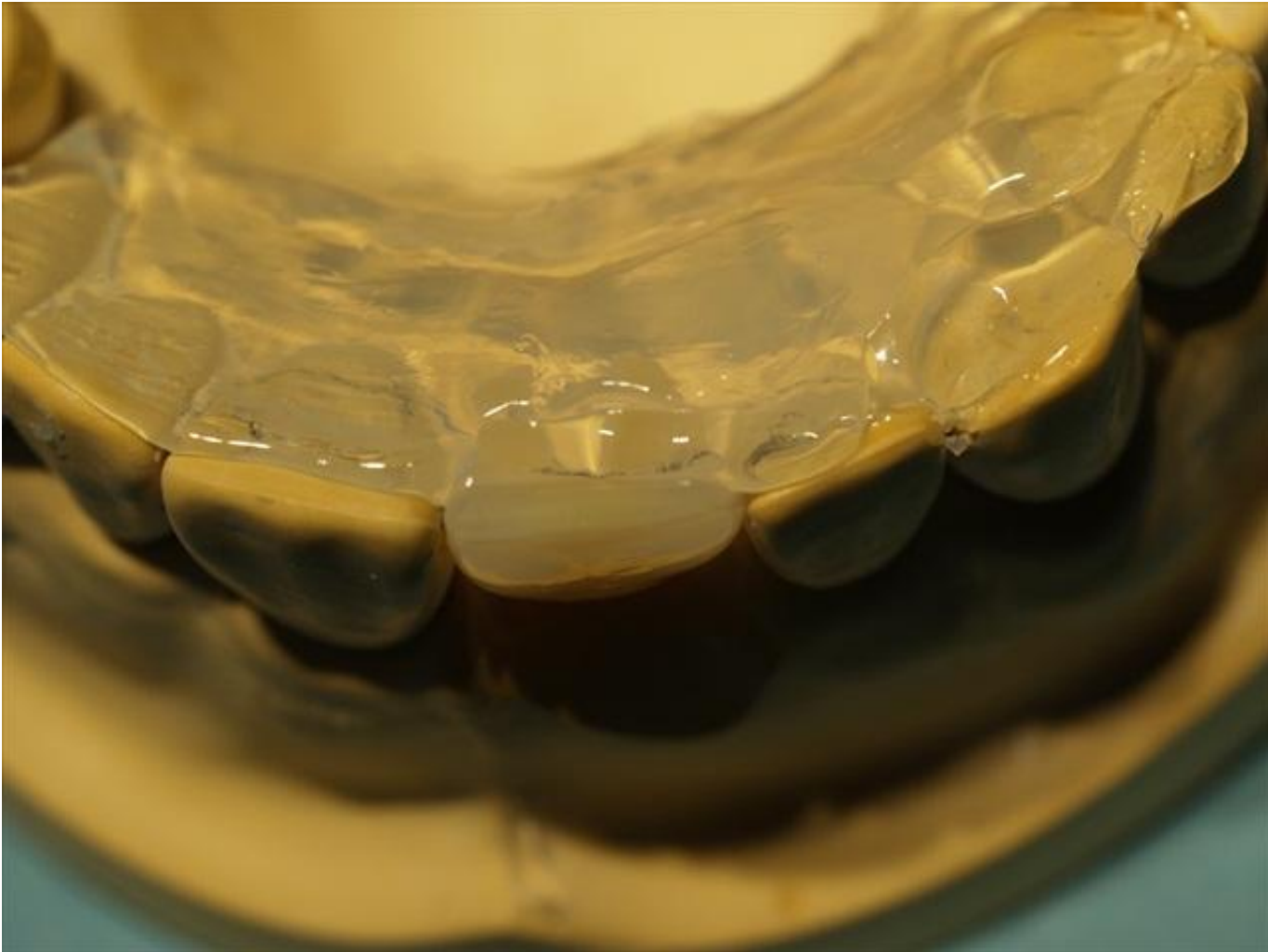
Draw position of fibers on to model. Apply stone separator to model.



Cut horizontal and vertical **retentive** troughs/channels into the lingual side of the space maintainer



Insert Fast Splant Matrix wax into position. Ensure wax is well adapted to interproximal areas.



Inject Fast Splint Matrix silicone onto the space maintainer and the adjacent abutments to create an index or record of the space maintainer and wax.

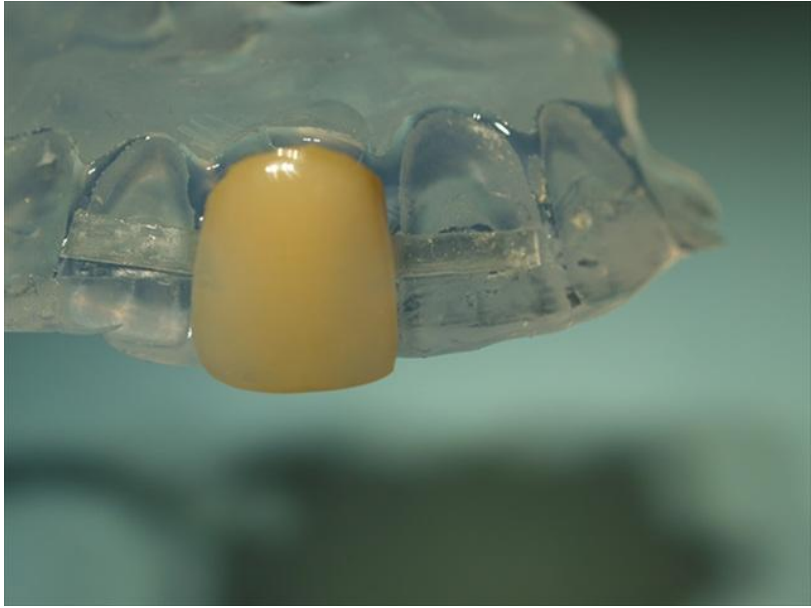


The cured silicone will create a record of the wax and space maintainer. Trim the index as required.

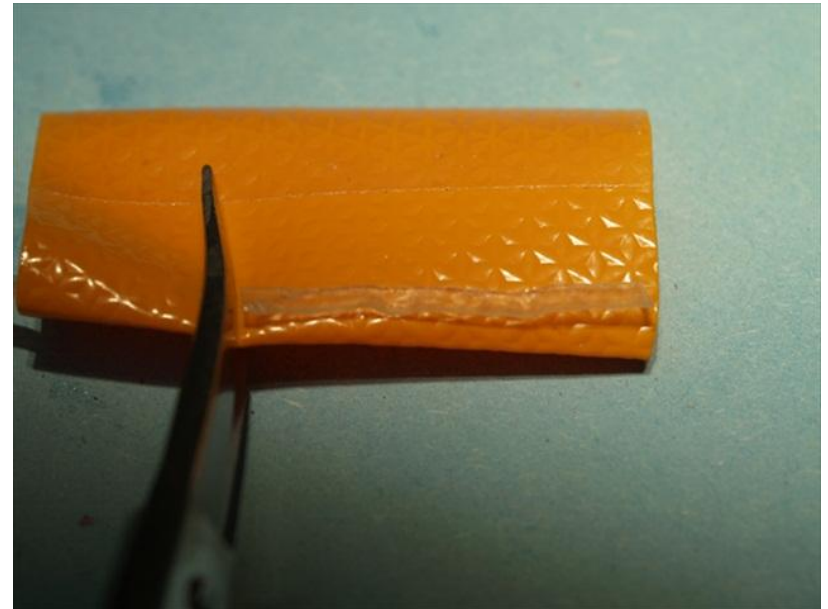




Place the index onto model to verify fit.



Using the wax strip, verify the fit of the space maintainer in the index.



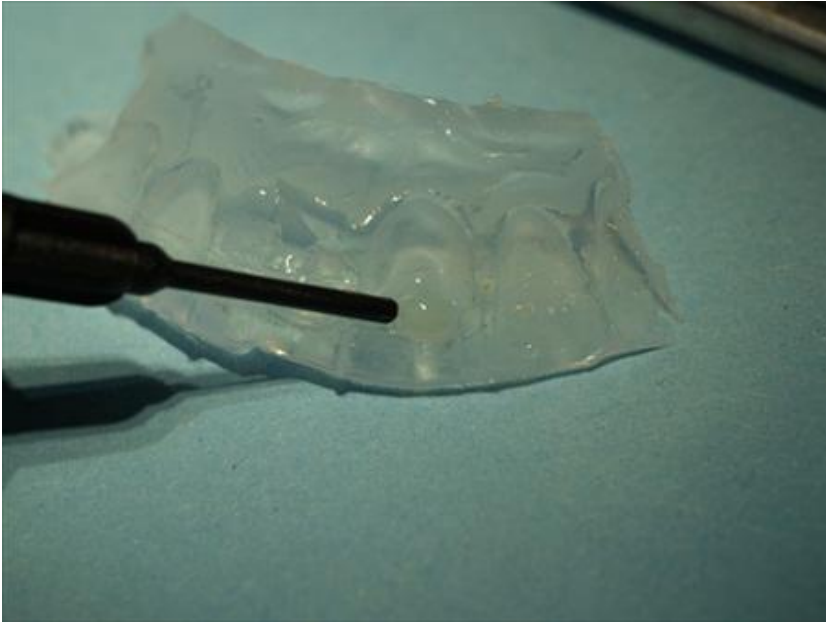
Using the spacer wax as a guide, cut the required length of Fast Splint Matrix fiber.



Apply Fast Splint Matrix bonding agent to the internal surfaces of the horizontal and vertical troughs and light cure for 30 seconds



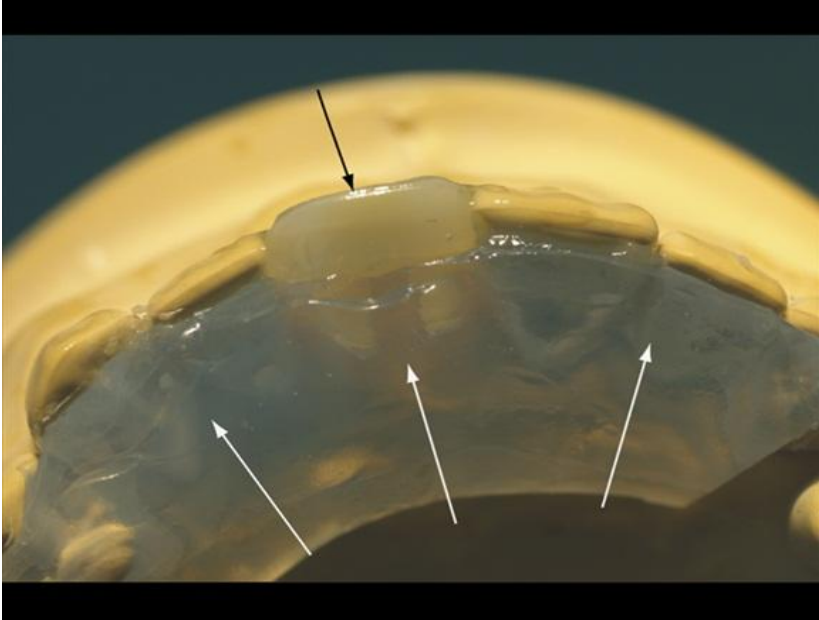
Inject Fast Splint Matrix flowable composite resin onto the vertical and horizontal troughs.



Inject flowable resin into the trough on the index.



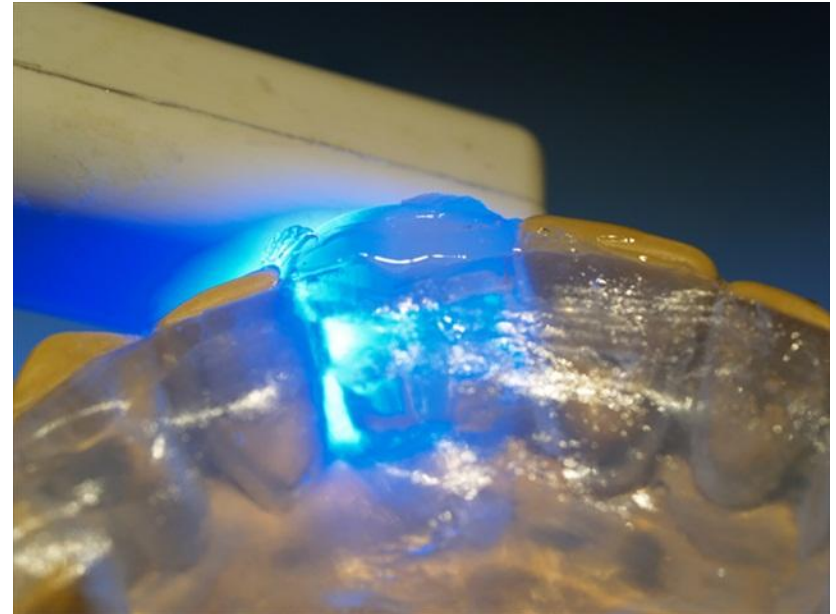
Insert the fiber into the trough



**Step one:** Place the index onto model

**Step two:** Place the space maintainer into position ensuring the fibers maintain the desired position.

Apply pressure on the index towards the lingual surfaces and on the space maintainer towards the facial surfaces.



Light cure for 30-60 seconds.



Remove the index.



Inject flowable resin into the trough and cover the fiber "wings". Light cure for 60 seconds.



Trim and polish the space maintainer to the desired final contours.  
**Insert intra-orally using the Fast Splint Matrix instructions for intra-oral bonding.**